

# Self-Retracting Boarding Steps for Boats



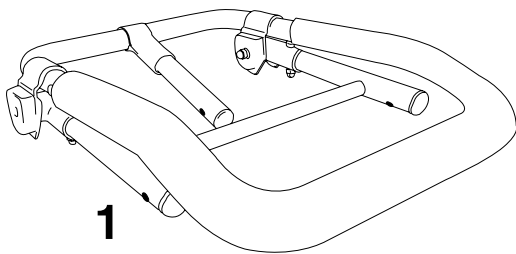
**AQUA**  
*Performance*

# ◆ WARNING ◆

**Do not** use the “Aqua Step” when boat is turned on or in motion. As serious injury may occur. **Do not** use the step to pull anyone or anything. Serious hull damage may occur. The “Aqua Step” is intended for boarding your boat in the water only. “Aqua Performance” will not be responsible for damage or injury due to improper use or installation of step.

U.S. & Canada Patent #5,152,244 - #5,458,080 - #5,927,433 - #5,970,905 - #6,021,733

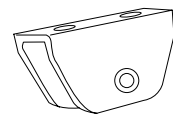
**\*READ ALL OF THESE INSTRUCTIONS THOROUGHLY BEFORE BEGINNING THE INSTALLATION OF THE BOARDING STEP. MAKE SURE YOU HAVE ALL PARTS & TOOLS TOGETHER BEFORE BEGINNING!**



**1**



**2**



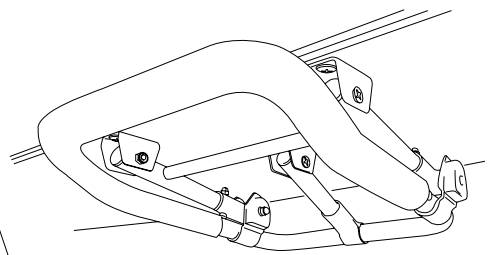
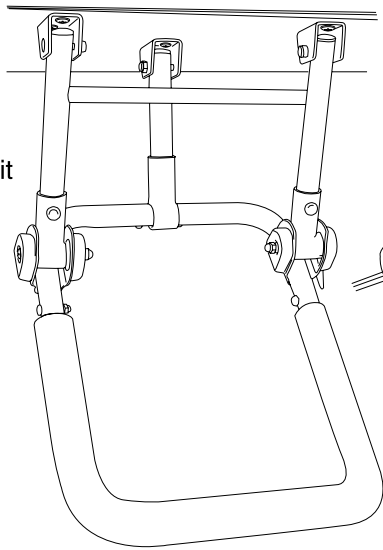
**3**

- 1: AQUA STEP (1)**
- 2: COUNTER SUNK BOLT (3) W/Lock Nut (3)**  
(To be used for Channel Brackets)
- 3: CHANNEL BRACKET (3)**

**INSTALLATION HARDWARE AVAILABLE:**  
 Carriage Bolts w/Lock Nuts  
 Phil Pan Machine Screws w/Lock Nuts  
 Reinforcement Plate and/or AVK Inserts

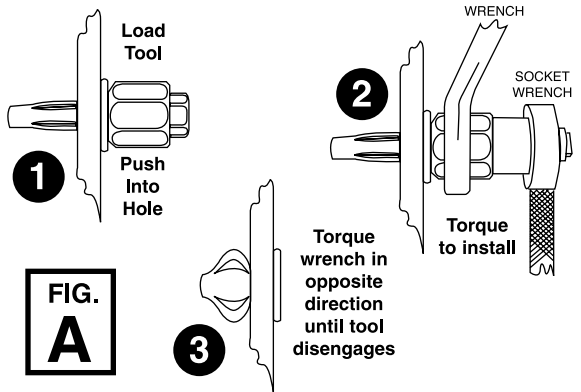
**TOOLS NEEDED:**

- Electric drill with a 3/16” drill bit
- Pencil or Washable Marker
- Tape Measure
- Phillips Screwdriver
- You’ll also need a tube of marine silicone.
- If your kit comes with AVK inserts, you will need a 25/64” drill bit (no substitutions), a wrench and a socket wrench.



**IF YOUR KIT COMES WITH AVK INSERTS:**

- 1) Verify that the spots you marked to be drilled are exactly the spots you want to drill. Using a 25/64” drill bit (no substitutions), drill holes.
- 2) Insert all 6 aluminum AVK inserts into drilled holes. Load tool and push into hole. Using your wrench, hold tool in place to prevent turning.
- 3) Now torque down the hex screw with the socket wrench clockwise. Once finished, remove installation tool by torquing counter clockwise. Do this same operation for all six holes. **SEE FIG. E.**



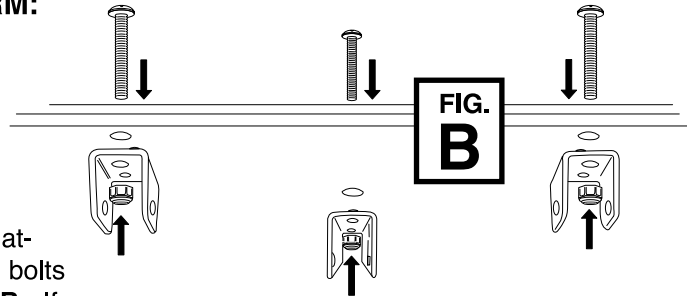
**MAINTENANCE**

To ensure the best operation of your aqua step, Aqua Performance recommends that you hose off your step after every use, as you would the rest of your watercraft. To remove sand build up: You will need to remove the side caps and use a hose to spray water inside the spring mechanism while moving the step up and down. When finished rinsing, we recommend and use Prolong Oil as a lubricant onto the spring. Replace caps and bolts to ensure a proper fit.

# METHOD OF INSTALLATION IF YOUR BOAT HAS . . .

## ADD-ON SWIM STEP OR TEAK PLATFORM:

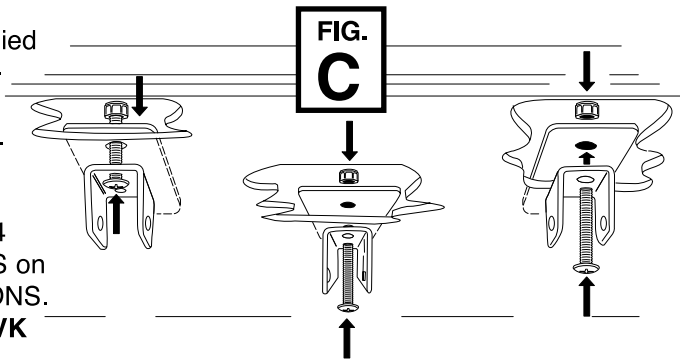
Through bolt from the top of platform.  
Drill size needed 3/16"



## INTEGRATED SWIM STEP PLATFORM:

1) If your swim step thickness is a solid 1 1/2" in thickness - through bolt from the top of your platform down into the bracket using a 2" carriage bolts w/lock nut. Drill size needed 3/16". **SEE FIG. B.** If platform thickness varies you may need to supply your own hardware.

2) If you are able to get between (inside) your platform use the reinforcement plates supplied on the inside and through bolt from the outside going in - using Phil Pan w/nut supplied. **SEE FIG. C.** Drill size needed 3/16".



3) If you are unable to get between your platform use AVK inserts. You will need a 25/64 size drill bit for holes. NO SUBSTITUTIONS on drill size. Follow special AVK INSTRUCTIONS. **SEE FIG. A ON PREVIOUS PAGE FOR AVK INSTRUCTIONS.**

## STEP #1

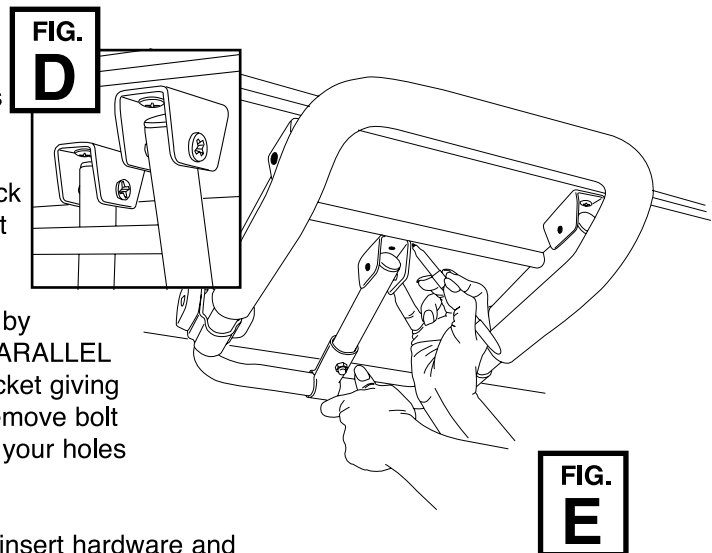
Insert the 2 front tube extensions inside the channel brackets and insert counter sunk bolt through channel bracket and tube to hold in place. **DO NOT** attach lock nuts yet (this will ease installation of third tube). Next, position step to the very front of your platform.

**Location is very important, it must be all the way to the front of the platform.**

Trace the 2 channel brackets giving yourself a guideline where to position. Next, remove bolt and place channel brackets over outline. Mark your holes and drill. Line up channel brackets over holes drilled. Add marine silicone to threads of hardware specified for your particular application and tighten. If you need AVK inserts **SEE FIG. A ON PREVIOUS PAGE.**

## STEP #2

Once more, line up the 2 front tube extensions inside the channel brackets and insert the counter-sunk bolt through bracket and tube to hold in place, **SEE FIG. D.** **DO NOT** attach lock nuts yet. With the 2 front tubes in place - insert counter sunk bolt through 3rd channel bracket and tube but, again do not attach lock nuts. Locate the position of the 3rd channel bracket by **RETRACTING** your step **ALL THE WAY UP, PARALLEL** to the platform surface. Trace the channel bracket giving yourself a guideline where to position. Next, remove bolt and place channel bracket over outline - mark your holes and drill. **SEE FIG. E.**



Place the channel bracket into position again, insert hardware and add marine silicone to threads and tighten. Once more place third tube in channel bracket insert counter-sunk bolt and tighten with lock nut. Now, go back and attach the outer 2 lock nuts on your front brackets and tighten.

MORE QUALITY PRODUCTS FROM

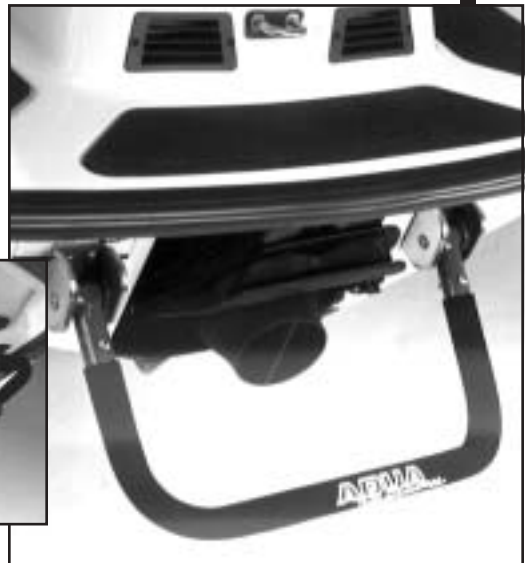
**AQUA**  
*Performance*

## steps for watercraft



The Aqua Performance watercraft step is designed to fit all Personal Watercraft sit-down models.

The spring-loaded stainless steel step stays in the upward position until needed for added safety benefits. The step features a soft marine foam covering for your non-slip protection and grip. It comes completely assembled with all stainless steel hardware.



**AQUA**  
*Performance*

425 N. Smith Ave.  
P.O. Box 370  
Corona, CA 91720  
951-340-9425

FAX 951-340-2056 •

[www.aquaperformance.com](http://www.aquaperformance.com)



## Boat

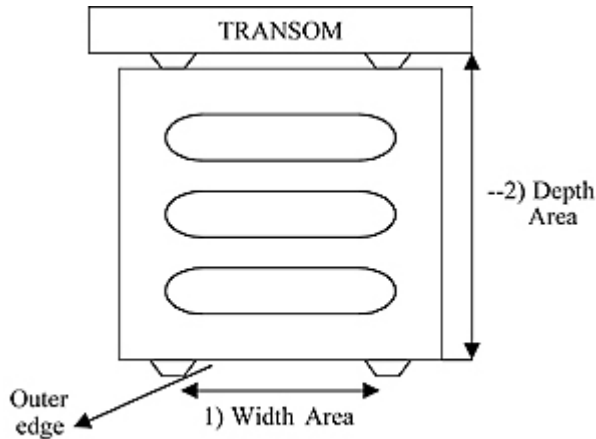
- Type of boat: \_\_\_\_\_
- Type of platform: \_\_\_\_\_
- Platform measurements: \_\_\_\_\_  
-they need to measure the available width and depth space of their swim platform to know what size of Aqua step will fit.
- Is there an exhaust or trim tabs in the area where the Aqua step will be mounted? \_\_\_\_\_
- Part # & size: \_\_\_\_\_
- Color: Black Polished White      Special Color: \_\_\_\_\_ (add \$50)
- Hardware needed: \_\_\_\_\_

- The step is basically a square frame with 3 legs (1063tl & 1060tl). We need to make sure the entire frame will fit underneath their swim platform without it hitting the transom or anything else (exhaust or trim tabs) that might be there, therefore it is important we know the available width and depth of their swim platform to determine the size of Aqua step that will fit correctly. All three mount brackets must be on the same level when mounted.
- How to measure instructions can be found on our website at [www.aquaperformance.com](http://www.aquaperformance.com) we have instructions for all different kinds of platforms.
- If they have a teak platform they must send a diagram because most have a lip or recession underneath and they normally need extended mounting brackets which are an additional cost (\$15.00/ea). We need to verify there will be drilling because there are so many factors out of our control; maintenance of platform, weather conditions, etc...we need to know how old it is as well because they will be doing a thru-bolt application and using carriage bolts to hold the Aqua step.

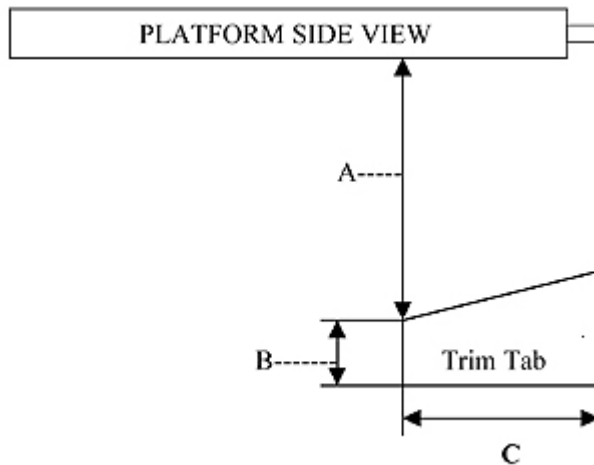
# Fiberglass or Teak Platforms

## How To Measure for your Aqua Step if you have an Add-On Platform with Open Slots

This platform has been added on, it is normally attached to the transom with mounting braces. There are three brackets that you will be mounting through your platform. Two will be placed at the most outer edge of your platform and one in the center. Simply follow the instructions to help you know what size of Aqua Step you will want.



**DIAGRAM A**



**DIAGRAM B**



#1



#2

### **Step 1:**

1. To know how much width area you have for your step, measure underneath your platform between the mounting braces. (**See diagram A and pic #1**). If you have an exhaust in between the mounting braces you might need to deduct this from your available width space. You can draw in your exhaust in diagram A above, please include how much width space it takes up from the mounting brace.
2. To know the depth of your platform, begin at the outer edge and measure all the way to the back if your transom (**see diagram A & pic #2**)

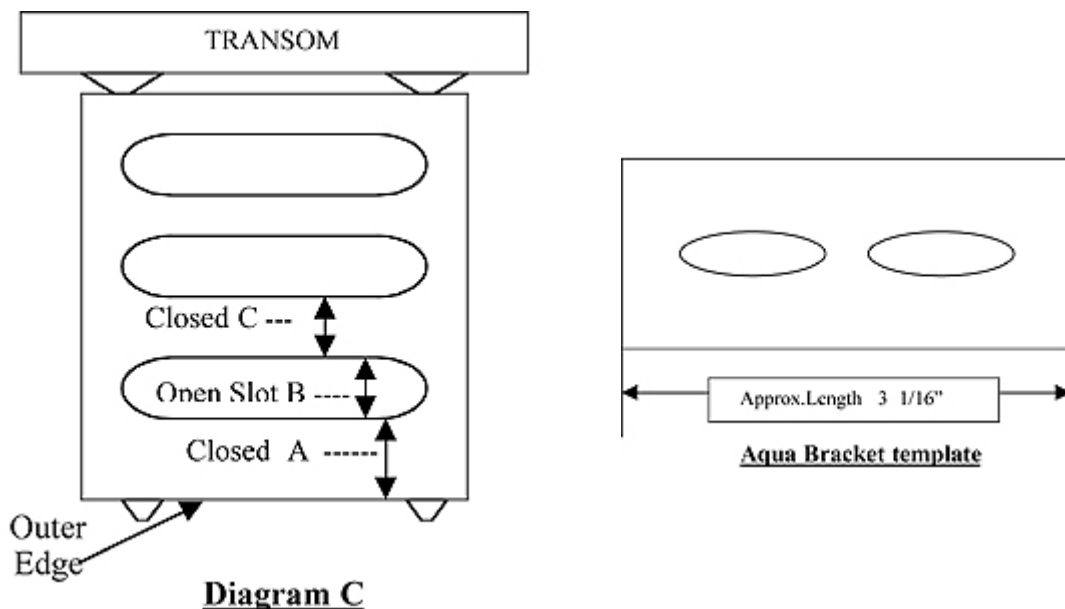
**Note:** If your platform is not flat underneath (some have a lip or recession) please draw that in **diagram B**, also include the flat area depth measurement you have all the way back to the transom.

## **Step 2:**

Use diagram B if you have an exhaust and/or trim tabs underneath your platform and if they are in the same area where you would be mounting your aqua step. Draw your exhaust in and include A, B and C: **A)** How far down they are from the platform. **B)** Write the width of the trimtab **C)** Write how far the exhaust pipe and/or trim tab comes out from the transom.

Aqua Performance has modified the mounting bracket to fit most platforms. Because it is impossible to know all the dimensions of the Fiberglass or Teak platforms out on the market you can use the template provided or write in your platform specifications and our technicians will be happy to help you. If you don't need assistance compare your platform measurements with the size chart for the 1063TL aqua boat step and call (800) 538-6729 for prompt assistance.

**Step #3:** Measure the space between each arrow as shown for A, B & C (**diagram C**) or use the template of the bracket to ensure a proper application



If you chose to use the template, cut it out and place it at the outer most edge of your platform, make sure to place it underneath your platform.

1. First, make sure that the bracket lines up with the solid sections of your platform as to where you will be drilling.
2. If you need a longer bracket you can use the template provided to draw the added length you need, you will need to mark where you will need the extra hole to be drilled. The new holes will not be oblong. Once we receive your bracket drawing we will use it as a template to weld a stainless steel metal plate to your bracket per your specifications and drill the new holes for you, therefore it is very important that you be accurate in your dimensions and new hole location.

When complete please fax your drawing to (951) 340-2056  
or mail to Tech Support, P.O. Box 370 • Corona, CA 92878-0370

Include your name and daytime phone number. Our technician will call you upon receiving your drawing.



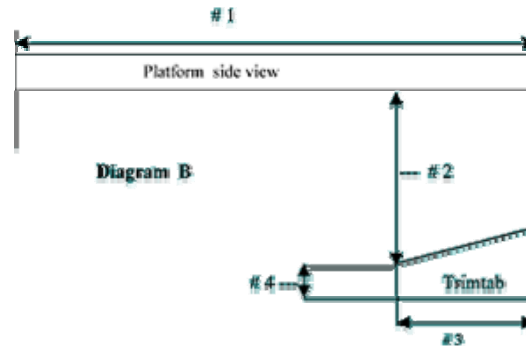
## How To Measure for Your Aqua Step if You Have An Integrated Platform

Your platform is an extension of your boat and on most boats you can get between your platform through the engine compartment to place the backing plates that will come with your order.

**STEP #1 - Click On Image for Printable Diagram A:**

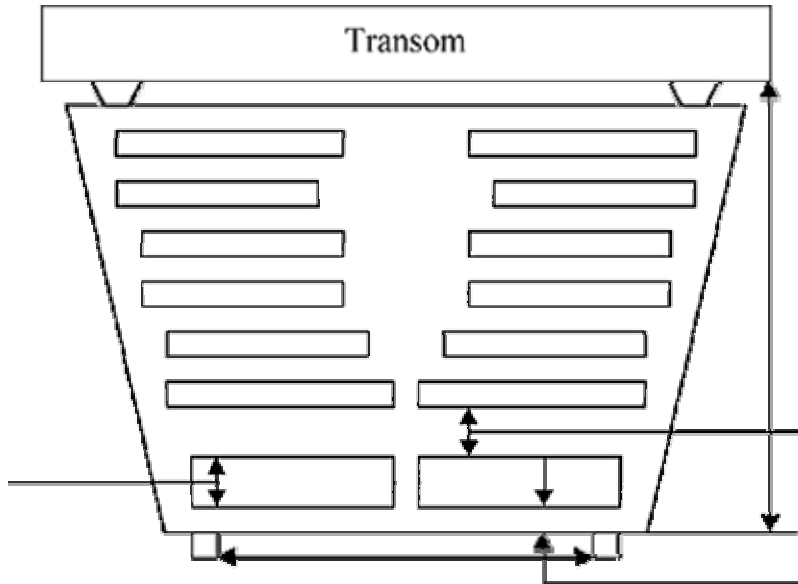


**STEP #2 - Click On Image Below for Printable Diagram B:**



# Aqua Performance

How To Measure for Your Aqua Step if you have an Aluminum Add-On Billet with Open Slots



**A:** To know the width area of where you will be mounting your aqua step, measure underneath your add-on platform between the mounting braces. If you have an exhaust in this area, include it in your drawing with the width diameter of the exhaust.

**B:** To know the depth of your platform, measure all the way to the back of your transom. Note: If your platform is not flat underneath (some have a recession or lip) you need to draw that in diagram B below, also give us the flat area measurement all the way back to the transom.

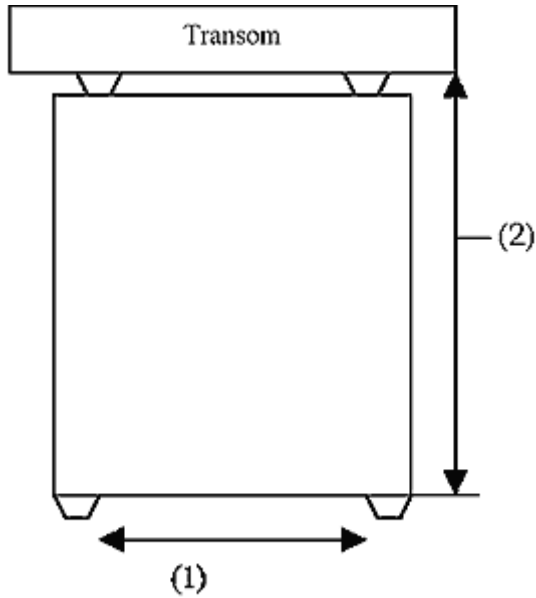
When complete please fax your drawing to (951) 340-2056  
or mail to Tech Support, P.O. Box 370 • Corona, CA 92878-0370

Include your name and daytime phone number.

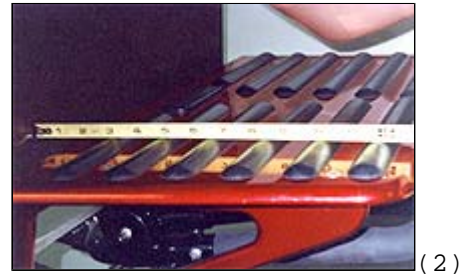
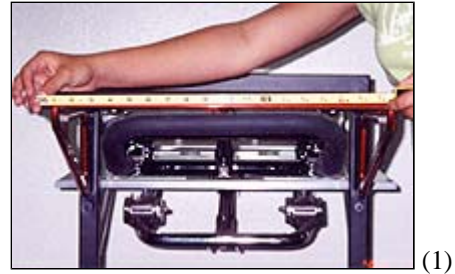
Our technician will call you upon receiving your drawing.

# Aqua Performance

How To Measure for Your Aqua Step if you have a Solid Add-On Platform



**Diagram A**



**Step #1:** Use Diagram A:

1) To know the width area of where you will be mounting your aqua step, measure underneath your add-on platform between the mounting braces. If you have an exhaust in this area, include it in your drawing with the width diameter of the exhaust.

2) To know the depth of your platform, measure underneath all the way to the back of your transom. Note if your platform is not flat underneath (some have a recession or lip) you need to draw that in diagram B, also give us the flat area measurement all the way back to the transom.

When complete please fax your drawing to (951) 340-2056  
or mail to Tech Support, P.O. Box 370 • Corona, CA 92878-0370

Include your name and daytime phone number.

Our technician will call you upon receiving your drawing.

## CENTER BOLT MEASUREMENT FOR THE AQUA STEPS

Make sure to mount the two front brackets as close to or all the way to the front of the platform. Location is very important, also making sure to place evenly.

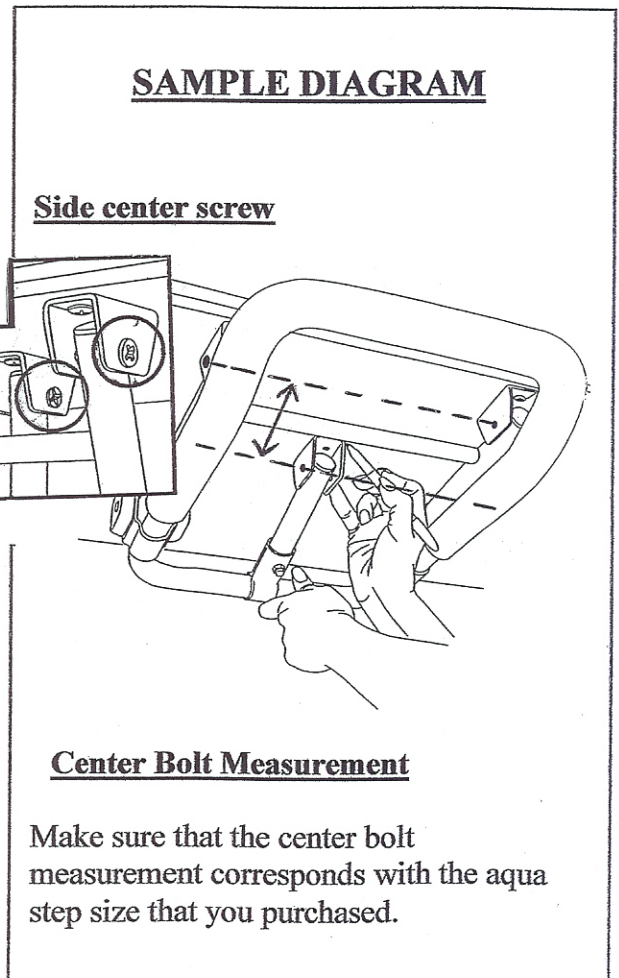
This will give you the best extension of the ladder when boarding the boat !!!

Once you have mounted the two front brackets draw a straight **horizontal line** underneath the platform **connecting the two side center screws of the brackets.** ( **The screw that holds the swinging leg**) **This will be your guideline for the back center bracket location.** See diagram below, the dotted lines represent the horizontal lines. **Do not measure at an angle!!!**

**FOR EXAMPLE:** For **all 18"** drop aqua steps, **begin at the horizontal guideline** and you will now measure **Straight Back** towards the transom exactly **6"** and draw another **horizontal line.** This is the location that you will line up the **side center screw** of the **center bracket** on. Line up the side screw on this line and trace the bracket and mark the holes where to drill on the platform.

**The chart below shows all the center bolt measurements.**

Aqua Step Part Number & Size	Center Bolt Measurement
1063TL - 10 X 18	6"
1063TL - 11 X 18	6"
1063TL - 14 X 18	6"
1063TL - 10 X 21	5 ½"
1063TL - 11 X 21	5 ½"
1063TL - 14 X 21	5 ½"
<b>TELESCOPING LADDER :</b>	
1065TL - 10 X 23	6"
1065TL - 11 X 23	6"
1065TL - 14 X 23	6"
1065TL - 10 X 26	5 ½"
1065TL - 11 X 26	5 ½"
1065TL - 14 X 26	5 ½"
NAS-28" MAGIC & CAT	11 3/8"
<b>DOUBLE STEP:</b>	
1060TL - 11 X 34"	10 ¼"





## BOAT APPLICATIONS

Type of Swim Platform	Mounting Hardware	Notes
Integrated platform Molded to the Boat	SS Backing Plates and SS Machine Screws	Can usually get in through the engine compartment to reinforce area.
Billet - w/ rubber inserts Add-on bolted to transom with brackets.	Button Head Screws Customer must use Lock tight	Can not through bolt because of grooves on the top
Billets with Open Slots Add-on, bolted to transom with brackets. If pre-drilled & Tapped	Button Head Screws Customer must use Lock tight	
Billets with Open Slots Add-on, bolted to transom with brackets. Not pre-drilled & Tapped	Counter Bore Sunk Screws	If customer will drill & Tap Button Head Screws Customer must use Lock tight
Solid Fiberglass Add - On Add-on, bolted to transom with brackets.	Carriage Bolts	Through Bolt application
Fiberglass w/ open Slots Add-on, bolted to transom with brackets.	Carriage Bolts	Through Bolt application
Teak Platforms Add-on, bolted to transom with brackets.	Carriage Bolts	Customer must send drawing to make sure Extended brackets are not needed for correct mounting Application of Aqua Step.