

HARDIN 11 Industry Dr. Palm Coast, FL 32137
MARINE 386-445-2500 / FAX 386-445-1122

PART NO.

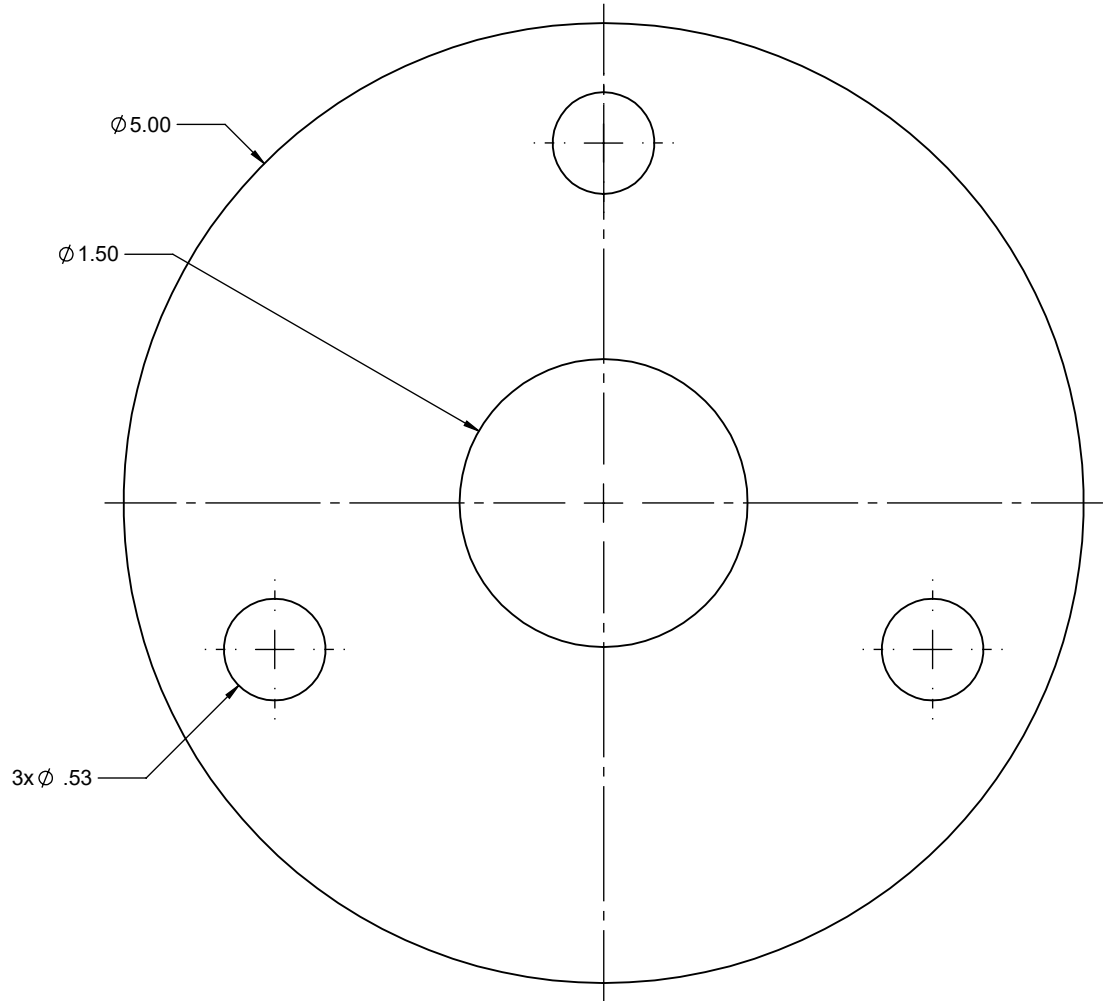
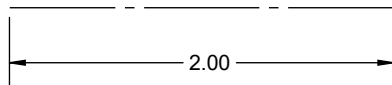
TITLE: MAYFAIR TILT STEERING COLUMN
DRILL TEMPLATE

www.hardin-marine.com

DRILL TEMPLATE USAGE:

- 1) MAKE SURE SCALE SIZE IS CORRECT.
- 2) 5" IS THE TILT HELM O.D..
- 3) TAPE TEMPLATE ON THE DASH.
- 4) USE A CENTER MARK TO MARK THE 4 HOLE LOCATION.
- 5) USE A 17/32 FOR THE 3 MOUNTING STUDS,
- 6) USE 1-1/2 HOLE SAW FOR CENTER,

THIS MUST BE PRINTED ON
FULL SCALE 1:1. MEASURE
THE BELOW LINE TO MAKE
SURE OF TEMPLATE SIZE.



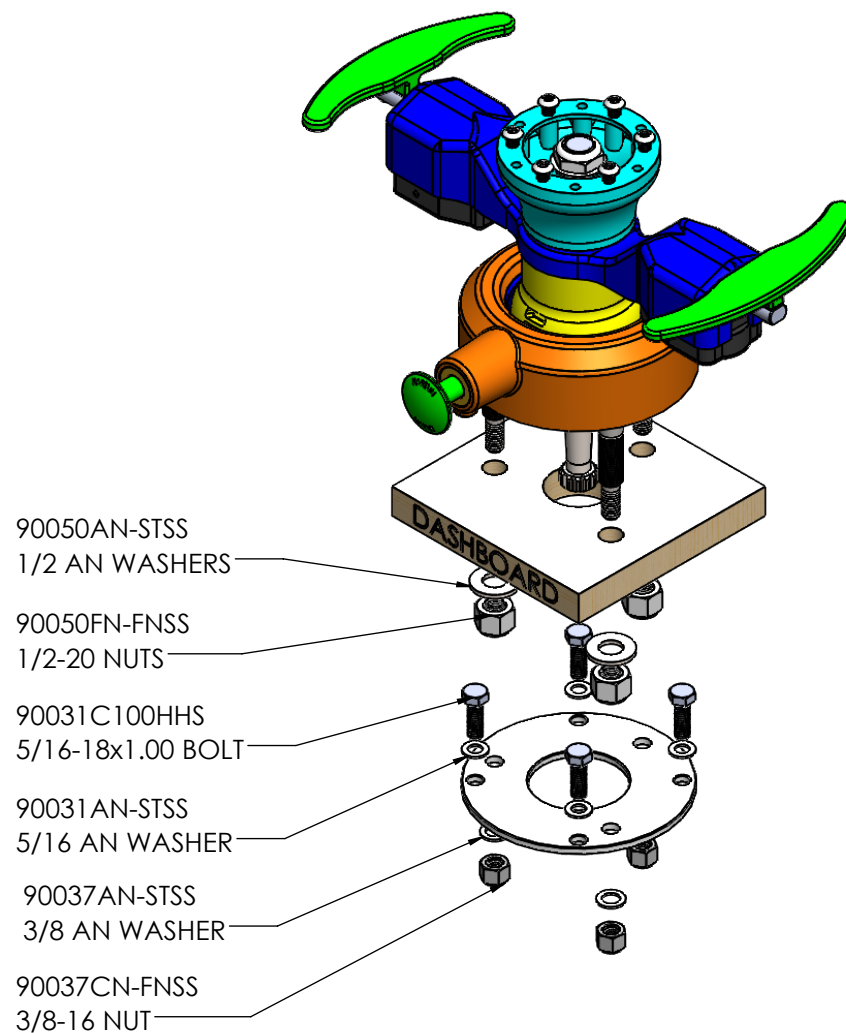
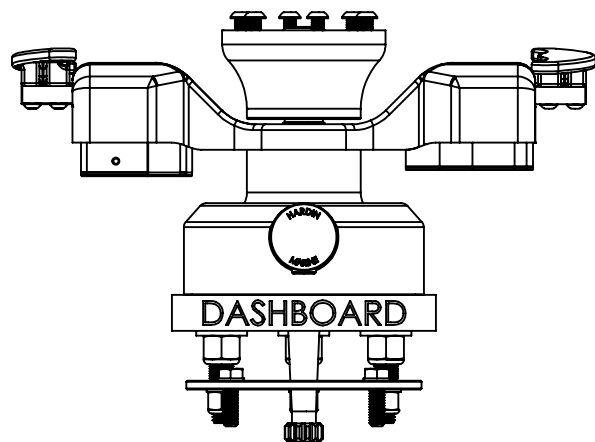
BOTTOM

HARDIN 11 Industry Dr. Palm Coast, FL 32137
MARINE 386-445-2500 / FAX 386-445-1122

PART NO.
137-9705

TITLE:
5-1/2 MAYFAIR CHARLYNN TILT STEERING
COLUMN w/ PADDLE TRIM INSTALLATION - STEP 1

www.hardin-marine.com



INSTALLATION INSTRUCTIONS:

- 1) USE THE SUPPLIED TEMPLATE TO DRILL THE DASHBOARDS.
- 2) APPLY ANTI-SIEZE TO BOTH THE 1/2 AND 3/8 THREADS ON THE 3 STUDS
- 3) INSTALL HELM THROUGH THE DASH.
- 4) USING 5/8 WRENCH, INSTALL COLUMN TO THE DASH WITH THE 1/2 NUTS AND WASHERS.
- 5) SLIDE 5/16 BOLTS WITH WASHERS INTO THE STAINLESS ADAPTER RING.
- 6) SLIDE STAINLESS ADAPTER RING OVER THE 3 STUDS,
- 7) USING 9/16 SOCKET TO INSTALL 3/8 NUTS AND WASHERS. TORQUE TO 30 FT. LBS..

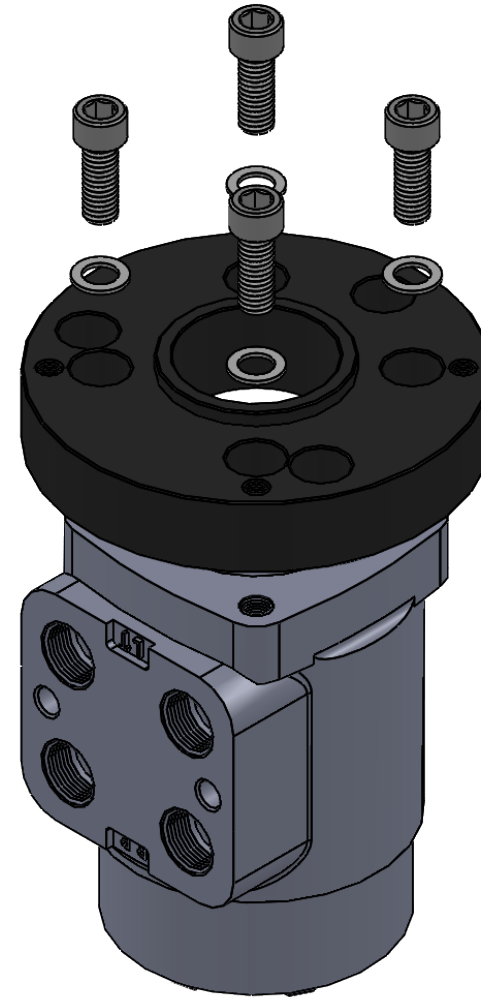
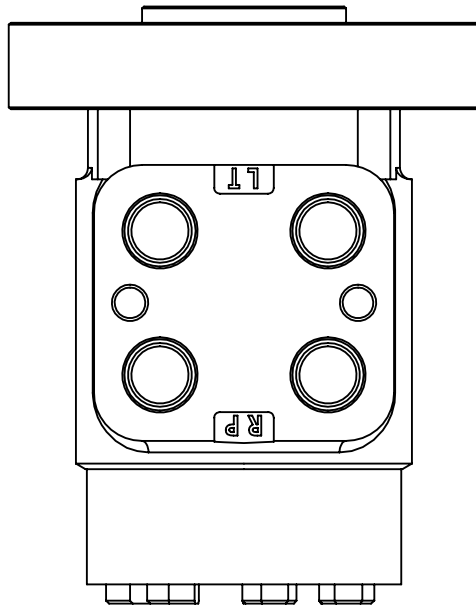
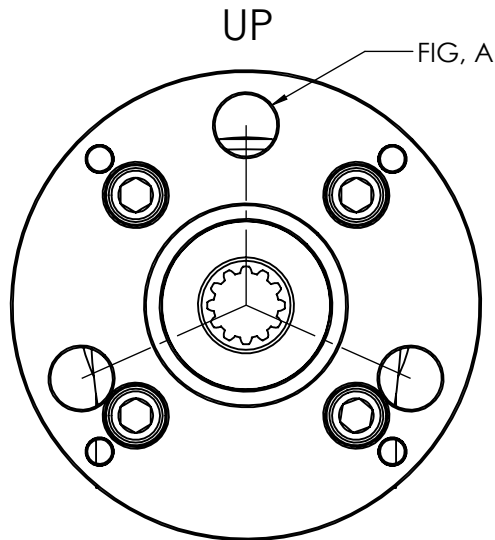
THIS DRAWING IS CONFIDENTIAL AND IS SUPPLIED ON EXPRESS CONDITION THAT IT SHALL NOT BE LENT, COPIED OR DISCLOSED TO ANY OTHER PERSON OR USED FOR ANY OTHER PURPOSE WITHOUT WRITTEN CONSENT OF HARDIN MARINE INC.. BREACH OF THIS CONTRACT WILL HOLD AND IT'S PRINCIPALS LIABLE FOR LOSS AND DAMAGES.

HARDIN 11 Industry Dr. Palm Coast, FL 32137
MARINE 386-445-2500 / FAX 386-445-1122

PART NO.
137-9705

TITLE: 5-1/2 MAYFAIR CHARLYNN TILT STEERING COLUMN
w/ PADDLE TRIM INSTALLATION - STEP 2

www.hardin-marine.com



INSTALLATION INSTRUCTIONS:

- 1) SEE FIG. A. THE UPPER ADAPTER ONLY GOES ON THE TILT HLEM ONE WAY. THE CHARLYNN HELM CAN BE ROTATED EVERY 90°.
- 2) APPLY RED LOCTITE TO THE 3/8-16 BOLTS.
- 3) INSTALL ADAPTER TO THE HELM WITH THE BOLTS AND WASHERS USING 5/16 HELM SOCKET. TORQUE TO 30 FT. LBS..

THIS DRAWING IS CONFIDENTIAL AND IS SUPPLIED ON EXPRESS CONDITION THAT IT SHALL NOT BE LENT, COPIED OR DISCLOSED TO ANY OTHER PERSON OR USED FOR ANY OTHER PURPOSE WITHOUT WRITTEN CONSENT OF HARDIN MARINE INC.. BREACH OF THIS CONTRACT WILL HOLD AND IT'S PRINCIPALS LIABLE FOR LOSS AND DAMAGES.

HARDIN 11 Industry Dr. Palm Coast, FL 32137
MARINE 386-445-2500 / FAX 386-445-1122

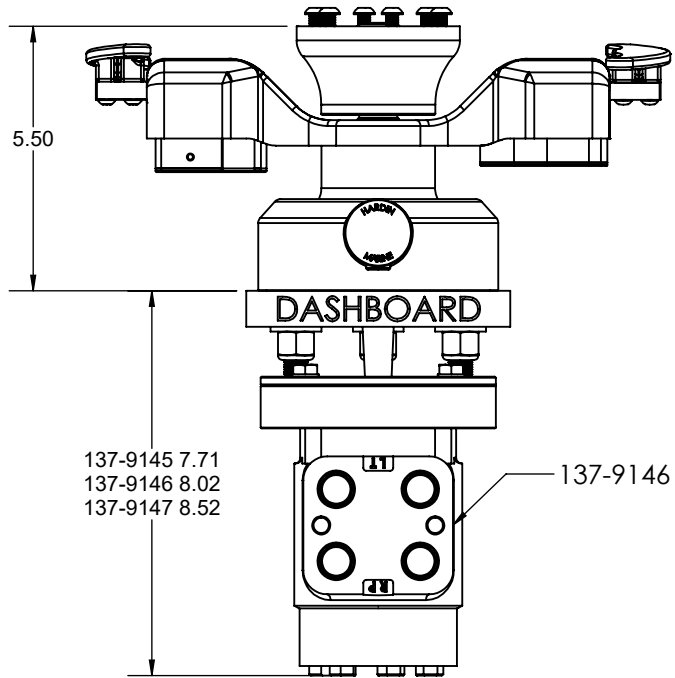
PART NO.
137-9705

TITLE:
5-1/2 MAYFAIR CHARLYNN TILT STEERING
COLUMN w/ PADDLE TRIM INSTALLATION - STEP 3

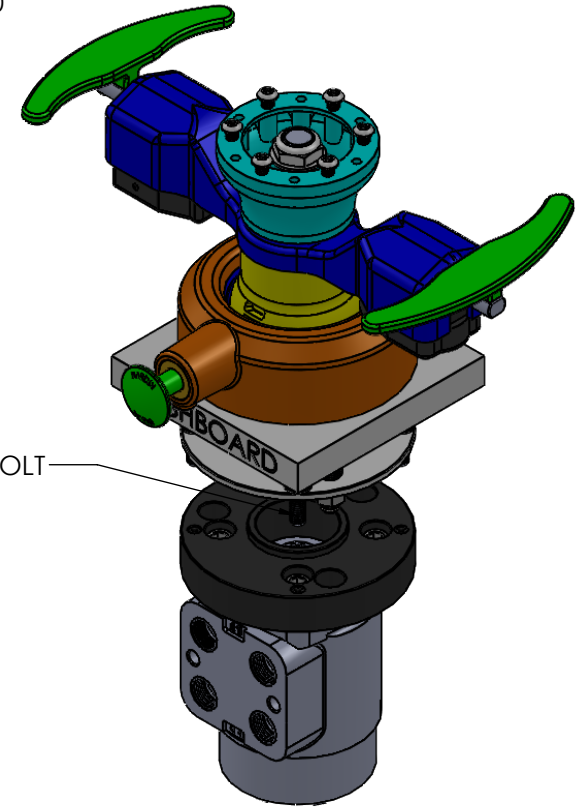
www.hardin-marine.com

NOTES:

- 1) WHEEL ADAPTERS ARE THREAD 1/4-20 IN BOTH DINO $\varnothing 2.91$ & MOMO $\varnothing 2.750$ BOLT PATTERNS.
- 2) SUPPLIED WITH (6) 1/4-20x5/8 BOLTS.
- 3) TILT MOVES 12.5° AND 25° IN BOTH DIRECTIONS.



5/16 BOLT



INSTALLATION INSTRUCTIONS:

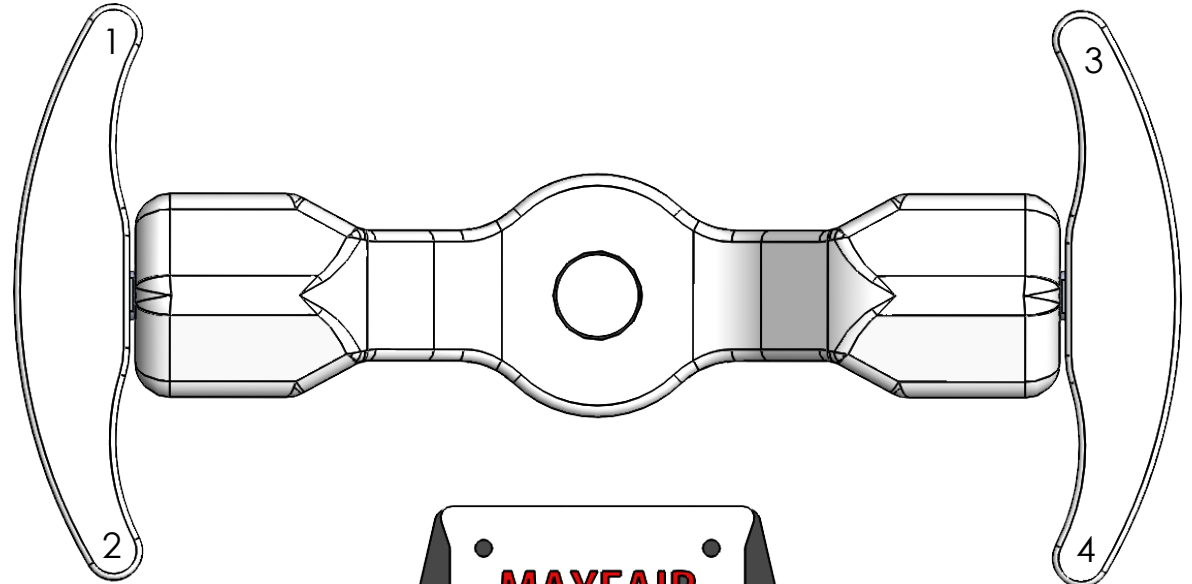
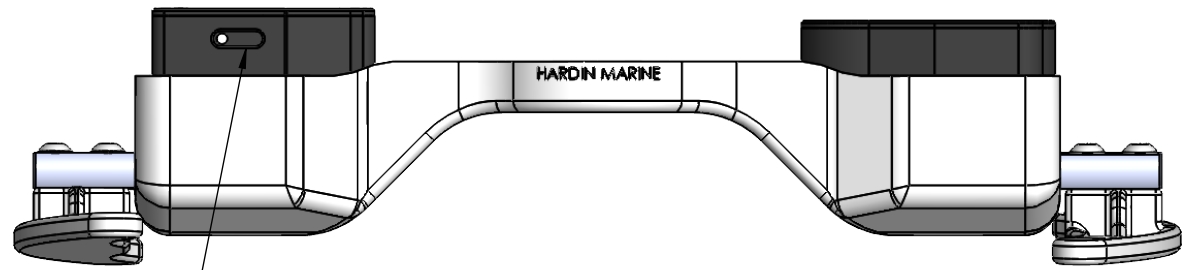
- 1) APPLY RED LOCTITE TO THE 5/16 BOLTS.
- 2) INSTALL HELM AND ADAPTER USING 1/2 WRENCH.

MAYFAIR ELECTRONICS

PART NO.
137-9765i

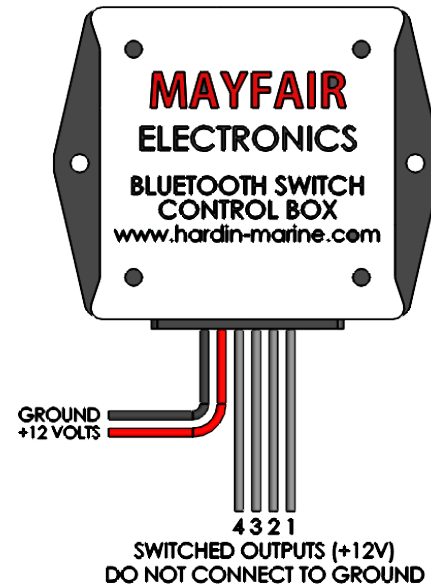
TITLE:
MAYFAIR BLUETOOTH PADDLE TRIM CONTROLER

www.hardin-marine.com



• INSTALLATION INSTRUCTIONS:

- WARNING: DO NOT CONNECT GRAY WIRES TO GROUND.
- WARNING: POWER INPUTS (RED AND BLACK) WIRES MUST NEVER BE CROSS-CONNECTED.
- 12 volt power supply must have 10 amp inline fuse.
- #1-#4 outputs (gray wires) are switched to +12 volts when the cooresponding Paddle Trim button is pressed.
- Maximum load of 10amps per switch.
- Comes with USB magnetic charger,
- Paddle Trim LED is RED while charging and turns BLUE when fully charged.

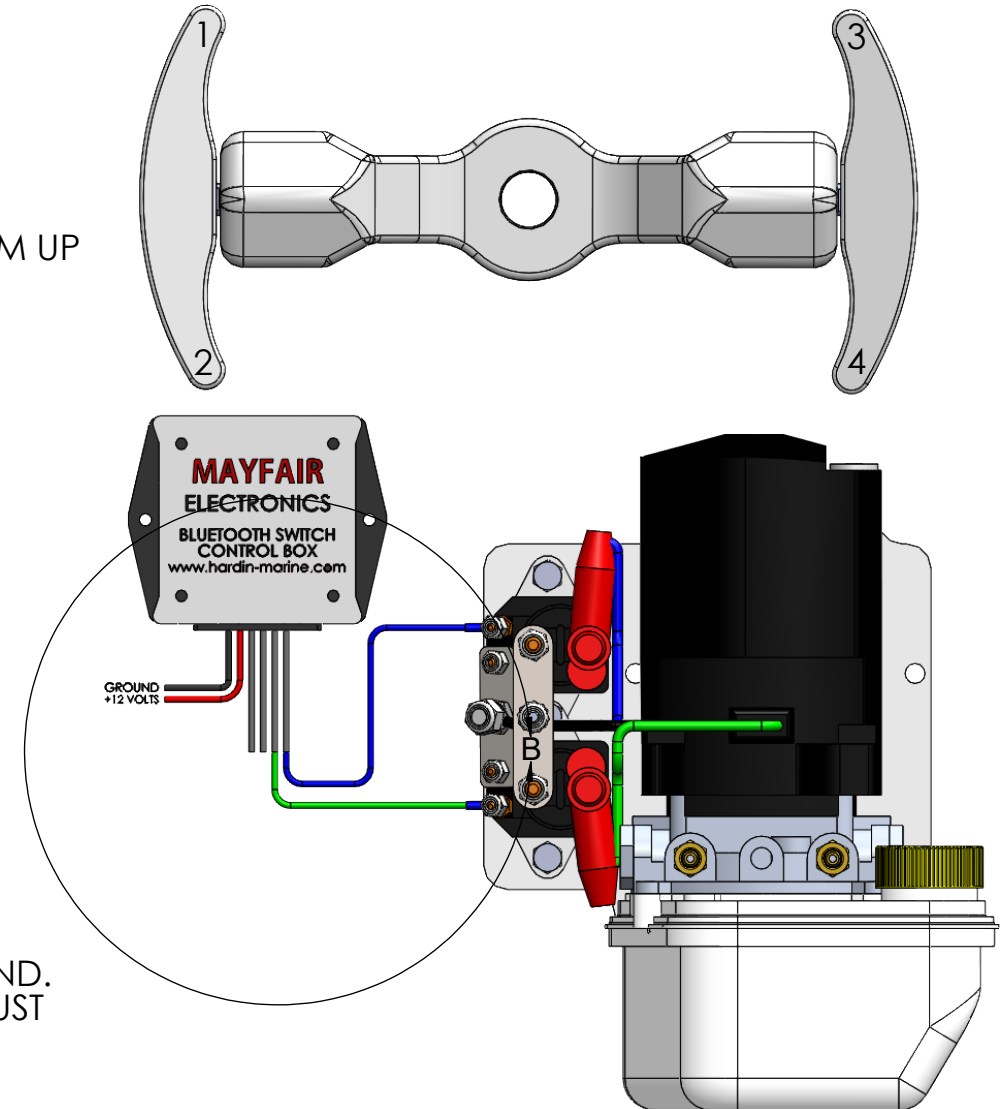
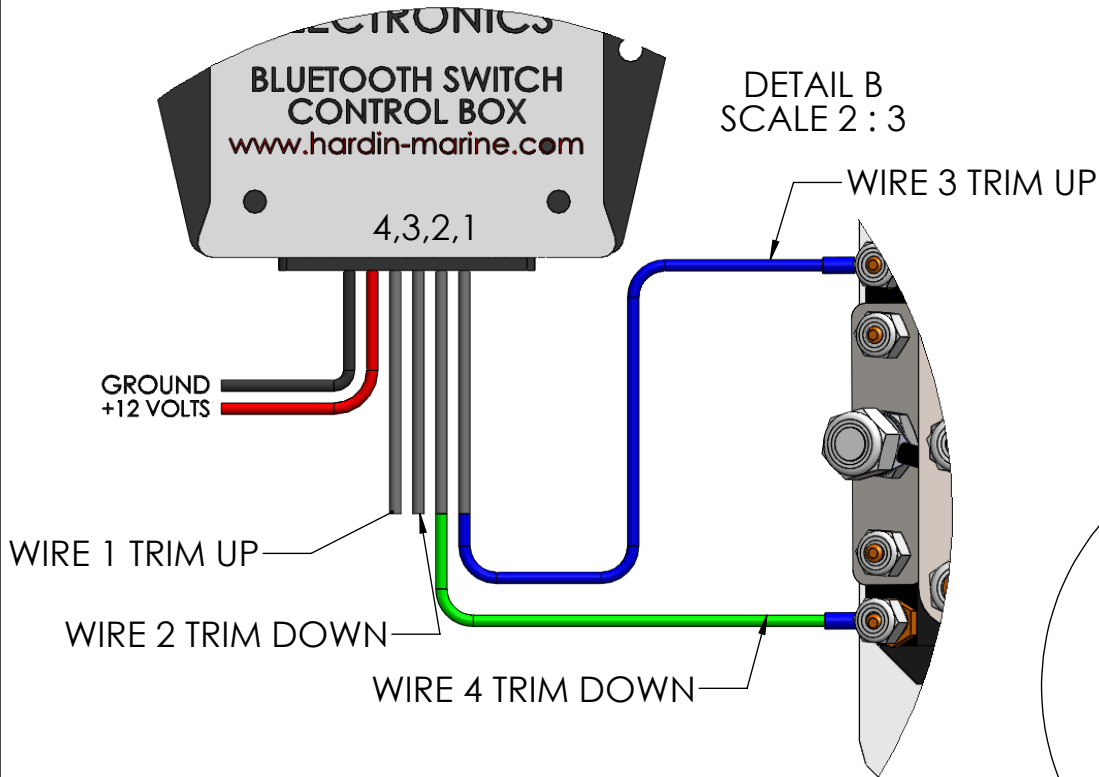


MAYFAIR PERFORMANCE

PART NO.
137-9765

TITLE:
MAYFAIR BLUETOOTH PADDLE TRIM CONTROLER

www.mayfairperformance.com



INSTALLATION INSTRUCTIONS:

- WARNING: DO NOT CONNECT GRAY WIRES TO GROUND.
- WARNING: POWER INPUTS (RED AND BLACK) WIRES MUST NEVER BE CROSS-CONNECTED.
- 12 volt power supply must have 10 amp inline fuse.
- #1-#4 outputs (gray wires) are switched to +12 volts when the cooresponding Paddle Trim button is pressed.
- Maximum load of 10amps per switch.
- Comes with USB magnetic charger,
- Paddle Trim LED is RED while charging and turns BLUE when fully charged.

THIS DRAWING IS CONFIDENTIAL AND IS SUPPLIED ON EXPRESS CONDITION THAT IT SHALL NOT BE LENT, COPIED OR DISCLOSED TO ANY OTHER PERSON OR USED FOR ANY OTHER PURPOSE WITHOUT WRITTEN CONSENT OF MAYFAIR HYDRAULICS INC.. BREACH OF THIS CONTRACT WILL HOLD AND IT'S PRINCIPALS LIABLE FOR LOSS AND DAMAGES.