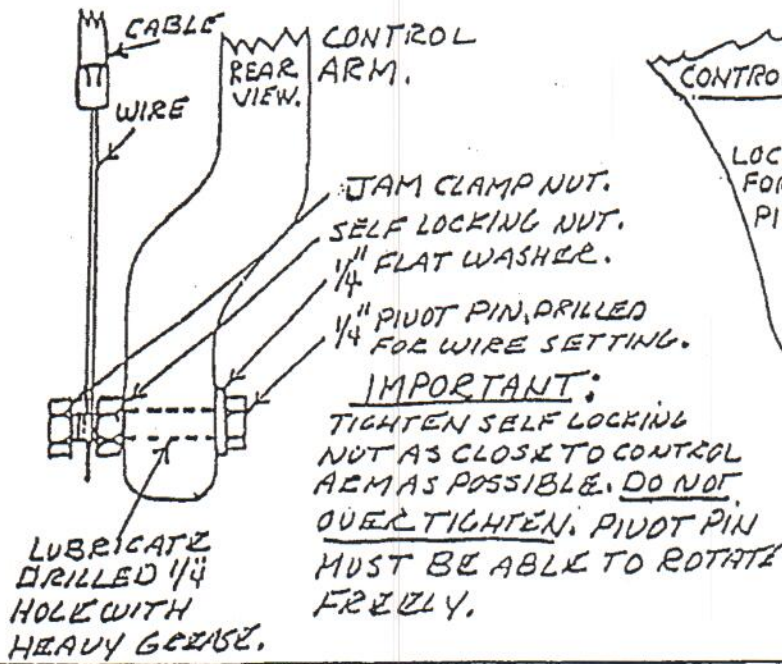
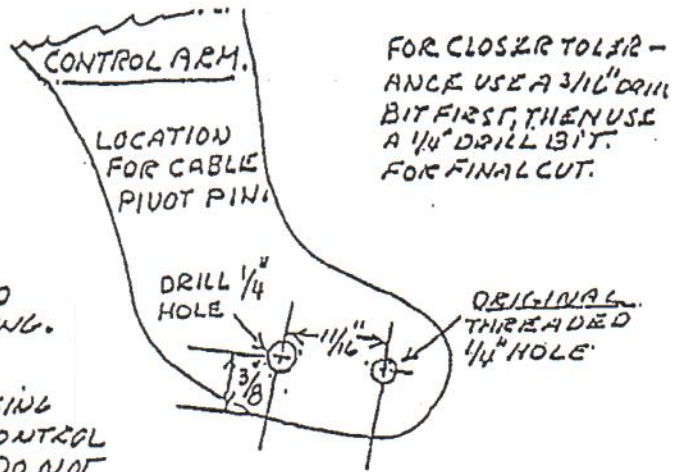


FLACE DIVERTER & CONTROLS

(INSTRUCTION) FOR CONTROL ARM PIVOT PIN MOUNTING.

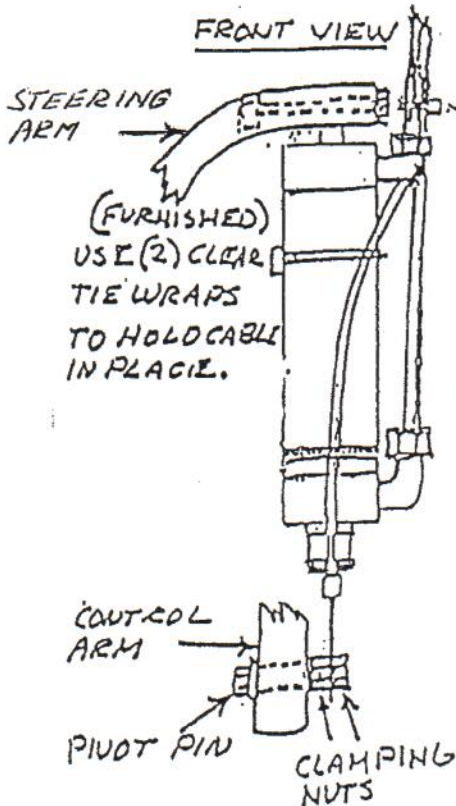


IMPORTANT:
TIGHTEN SELF LOCKING NUT AS CLOSE TO CONTROL ARM AS POSSIBLE. DO NOT OVERTIGHTEN. PIVOT PIN MUST BE ABLE TO ROTATE FREELY.

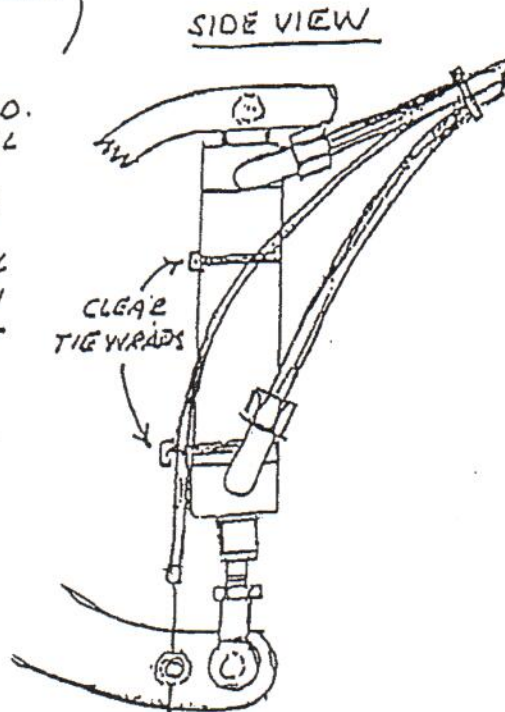


FOR CLOSER TOLERANCE USE A $\frac{3}{16}$ " DRILL BIT FIRST, THEN USE A $\frac{1}{4}$ " DRILL BIT FOR FINAL CUT.

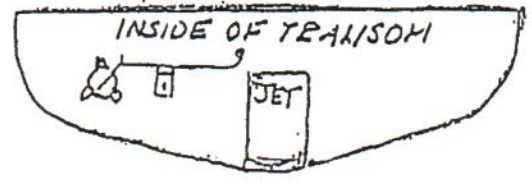
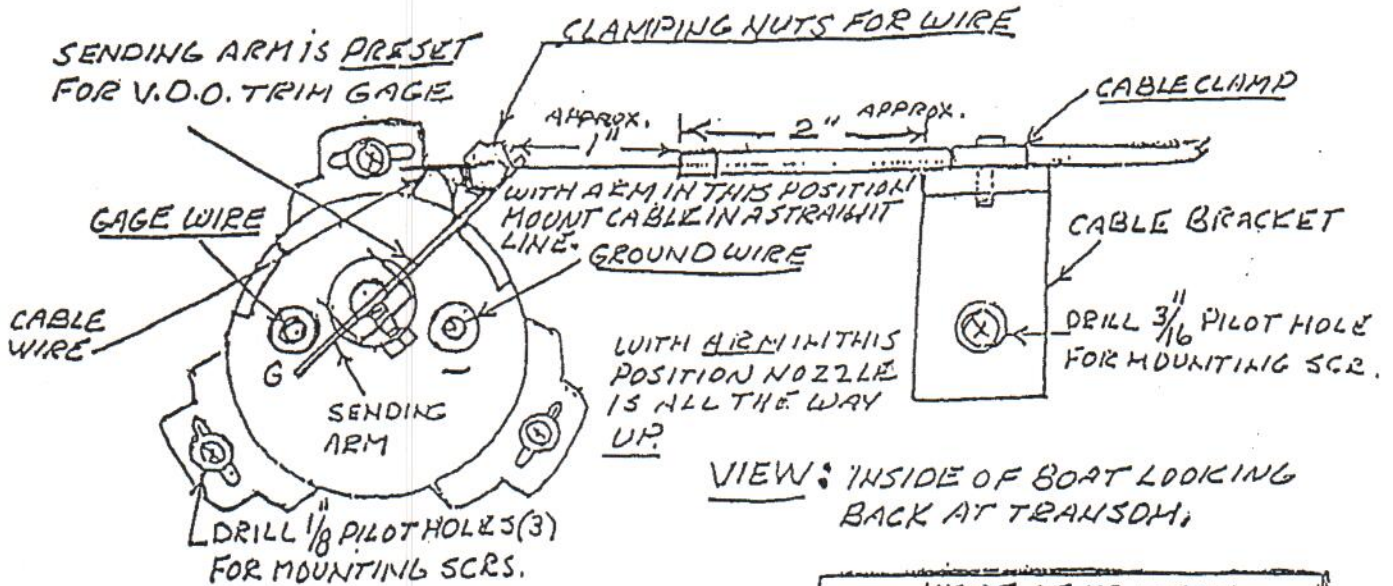
(MOUNTING CABLE TO CYLINDER)



TIE CABLE TO HYD. LINES WITH SMALL BLK. TIE WRAPS. FOLLOW HYD LINE TO AND THROUGH TRAN S O M. DRILL A $\frac{3}{16}$ " HOLE THROUGH TRAN S O M. IF NECESSARY, SEAL WITH SILICONE.



SENDING UNIT & CABLE BRACKET MOUNTING



CABLE INSTRUCTIONS:

CRIMPED END OF CABLE IS SEALED AND GOES OUTSIDE OF BOAT. THE OTHER END OF CABLE WITH LOOSE END CAP CAN BE CUT TO DESIRED LENGTH WITH WIRE CUTTERS + END CAP GLUED BACK ON.

SENDING UNIT ADJUSTMENT:

POSITION PLACE DIVERTER IN MAXIMUM UP POSITION. PUT SENDING UNIT ARM IN POSITION AS SHOWN ABOVE. PLACE WIRE FROM CABLE THRU HOLE IN PIN AND TIGHTEN CLAMPING NUTS. PLACE WIRE THRU PIVOT PIN ON PLACE DIVERTER AND TIGHTEN CLAMPING NUTS. TRIM GAGE SHOULD READ ACCORDINGLY. MINOR ADJUSTMENTS MAY BE NECESSARY.

WIRING SYSTEM:

